

REXTON TRUCORE UPDATE

**48 CHANNEL FIRST FIT
IN CONNEXX HANDBOOK**

REXTON

WHAT IS THE SOLUTION?

Rexton TruCore (6C 80/60/40, E1 30/20/10) & Inox 5, Sterling 5 & Targa 5 offer different number of handles and processing channels across performance levels.

Performance Level	Handles	Processing Channels
PL 80	20	48
PL 60	16	32
PL 40	12	24
PL 30	8	16
PL 20	8	16
PL 10	6	12
PL 5	4	8

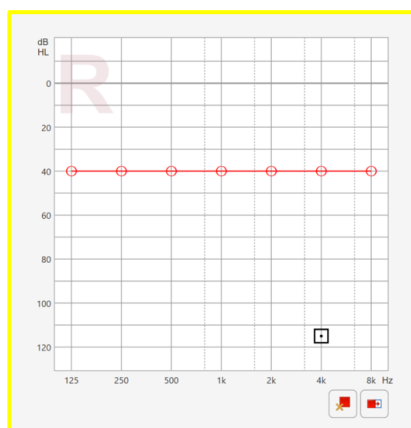
With this update of the Connexx First Fit workflow, all performance levels will be offering the 48 Channel First Fit, regardless of how many handles and processing channels they have.

WHAT IS MATCH-TO-TARGET? AND HOW DOES 48 CHANNEL FIRST FIT IMPROVE THE MATCH-TO-TARGET?

- Based on the hearing loss, Connexx creates the **target curve (red)** which provides the optimal fit for the respective patient.
- The **Hearing Aid amplification curve (black)** should match the red curve for best match-to-target.
- The match-to-target is highly influenced in how many channels the first fit can be calculated; more channels allow more flexibility in the adjustment of the black **Hearing Aid amplification curve**.

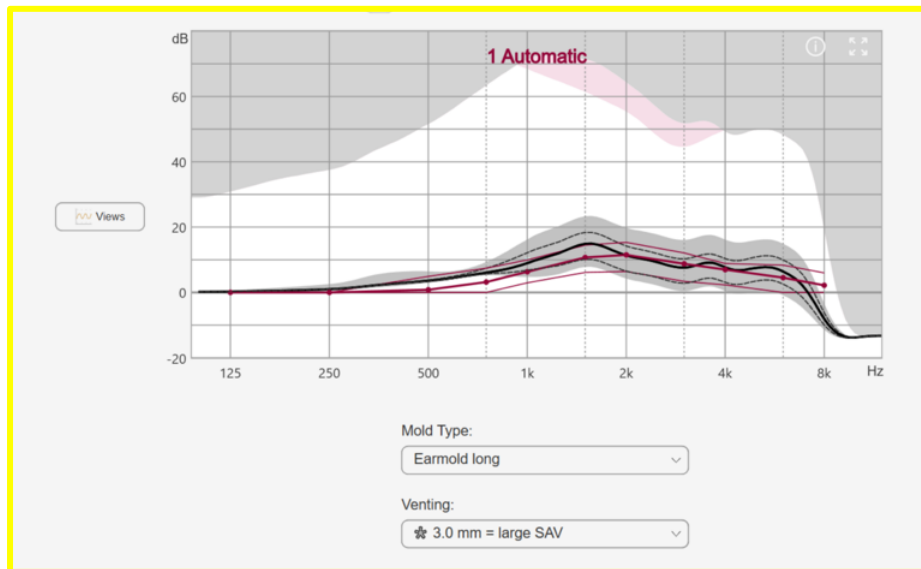
48 Channel First Fit provides a perfect match-to-target with a touch of a button.

Let's take this audiogram as an example:



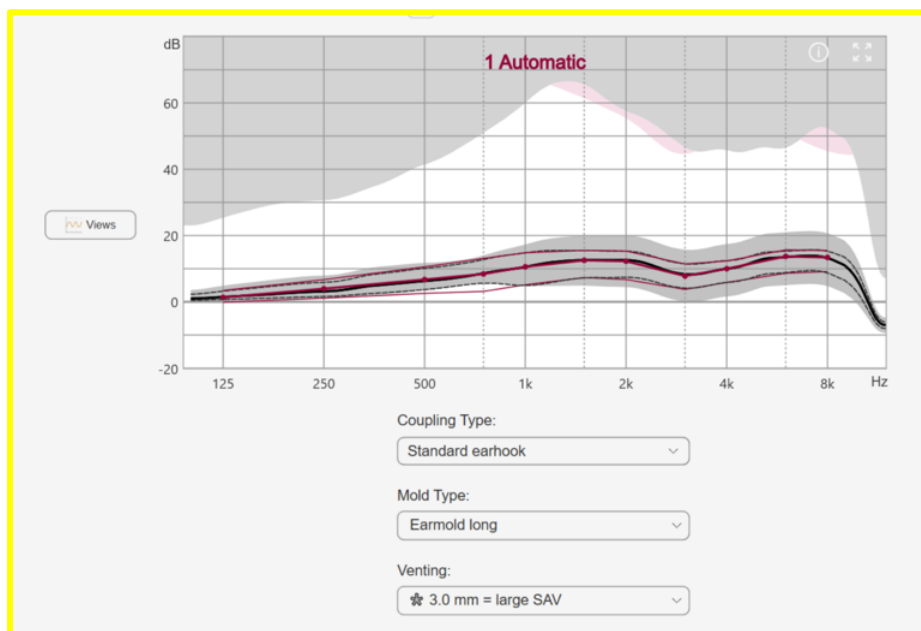
For simple visualization a flat -40dB hearing loss

With a 12 channel first fit (Rexton TruCore E1 PL10), this is the match-to-target condition calculated by Connexx for the hearing loss above:



NEW from CONNEXX 9.9 onwards:

With the 48 channel fitting engine, the gain prescription looks like this for the same hearing loss and the same hearing aid:



WHICH PRODUCTS ARE BENEFITTING FROM THIS NEW FITTING APPROACH?

Rexton TruCore (6C 80/60/40, E1 30/20/10) & Inox 5, Sterling 5 & Targa 5, in all performance levels and all form factors.

The highest benefit of the new 48 Channel First Fit applies to the lower performance levels.

This is how the solution will perform in each performance level:

- **PL 80:** no benefit, as in this performance level devices are already fitted in 48 channels
- **PL 60-40:** little benefit
- **PL 30-20:** some benefit (increasing from 16 to 48)
- **PL 10:** great benefit (increasing from 12 to 48)
- **PL 5:** major benefit (increasing from 8 to 48)

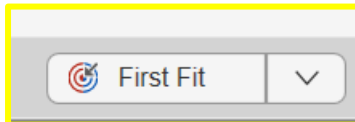
The 48 channel fitting approach is applied regardless of coupler or fitting formula, and it also applies for Insitu based fitting in combination with AutoFit.

How to activate it?

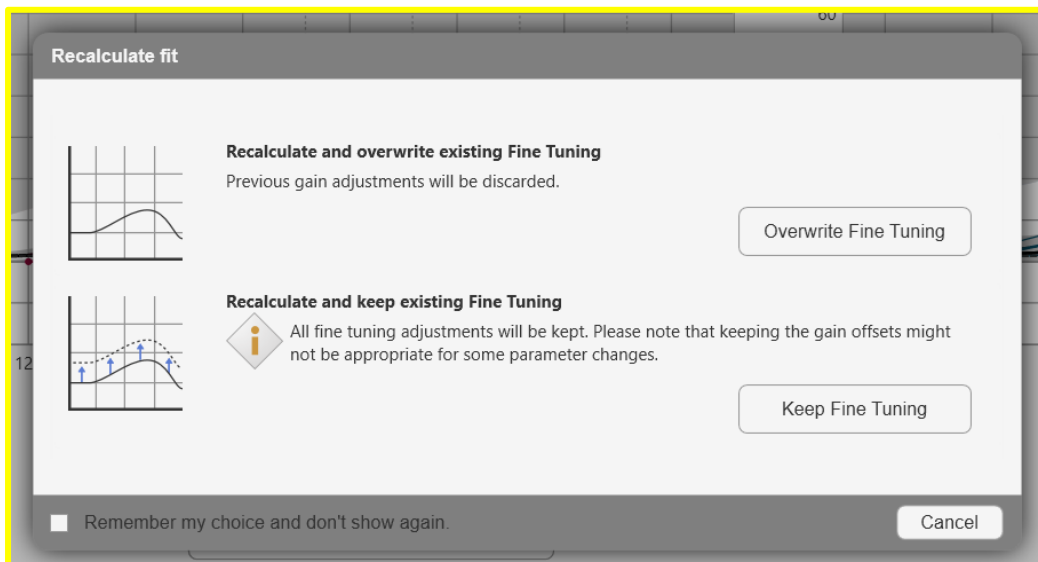
The roll out of this feature is within Connexx 9.9.10 update, in 2023 H2.

Both new and existing Rexton TruCore (6C 80/60/40, E1 30/20/10) & Inox 5, Sterling 5 & Targa 5 products can benefit from this feature.

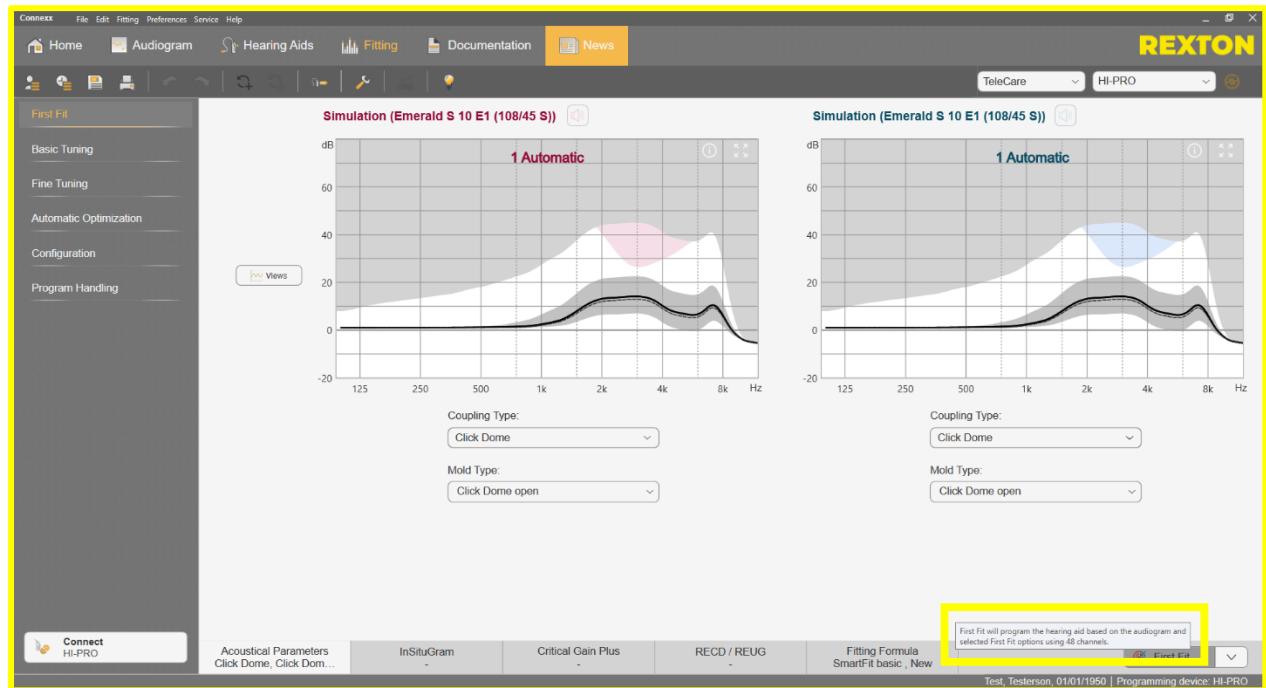
For new devices, it comes as default and all it takes is a regular first fit flow. By clicking “First Fit”, it will automatically calculate amplification through the 48 channel fitting strategy.



For existing devices in the market, a new First Fit can be performed in order to activate the 48 channel fitting. Remember to overwrite existing Fine Tuning, so the gain adjustments are properly replaced.



Connexx features a new Mouse Over for Rexton TruCore (6C 80/60/40, E1 30/20/10) & Inox 5, Sterling 5 & Targa 5 and all above platforms explaining that First Fit is conducted in 48 Channels.



What are the benefits of this solution for HCPs?

- **Much more reliable first fit experience:** it's extremely important to professionals that the first fit delivers at its best, otherwise it can compromise the outcome and end up in an unsuccessful trial.
- **Time-saving:** Fine-tune sessions will be reduced, since amplification is being delivered at a much higher precision now.
- **Rest assured that even low price points will be reliable:** because the benefit is mainly for lower price points, it makes HCPs confident that even the low entrance solutions in Rexton portfolio will perform reliably, due to a perfect match to target strategy.
- **A helping hand for new professionals:** unexperienced professionals can benefit from plug-and-play solutions: 48 channel first fit provides best match-to-target across all fittings with a touch of a button.

What are the benefits of this solution for users?

- **Reliable sound impression, from the beginning:** to rely on a hearing aid, users need to get the right amplification with the first fitting.
- **Less return visits for fine-tuning.**
- **Reliability, regardless of the budget:** users that can not afford the highest technology solutions shall also get access to the right amount of amplification for the optimal sound experience.

RELY ON REXTON

We believe that nothing hearing related should ever be left to chance, both for the people with hearing loss, and those who depend upon them. We understand their challenges and we meet them with proven hearing technology that is made Lifeproof so it can be counted upon to perform reliably in even the harshest environments. At work, at home, during leisure time, exercise and in all weather, you can always **RELY ON REXTON.**

**GETTING
THE JOB DONE
SINCE 1955**

WWW.REXTON.COM